

Epoxy resin is a two-part system consisting of a resin and a hardener. When mixed together, they undergo a chemical reaction to form a solid, durable material. Epoxy resin is used in a wide range of applications, including:

- **Construction:** Epoxy resin is used for floor coatings, wall treatments, and repair of concrete surfaces.
- **Automotive:** Epoxy resin is used for repair of damaged parts and for the production of composite materials.
- **Marine:** Epoxy resin is used for the repair of boat hulls and for the production of marine composites.
- **Art and Design:** Epoxy resin is used for the production of art pieces, jewelry, and decorative coatings.
- **Industrial:** Epoxy resin is used for the production of electrical insulators, adhesives, and coatings.

Epoxy resin is a versatile material that can be used in a wide range of applications. It is a durable, strong material that can be used for a variety of purposes.



Epoxy resin is a versatile material that can be used in a wide range of applications. It is a durable, strong material that can be used for a variety of purposes.

Off White

Gainsboro

Grayish

Medium Gray

Dull Gray

Silver Gray

Metal Gray

Starry Gray

Luxury Gray

Slate Gray

Greyish Green

Yellow Gray

Brownness

Terra Brown

Glacier White

Calaeatta

Pearl Gold

Primrose Yellow

Shiny Gold

Buff Beige

Grayish Yellow

Yellowish Brown

Soft Khaki

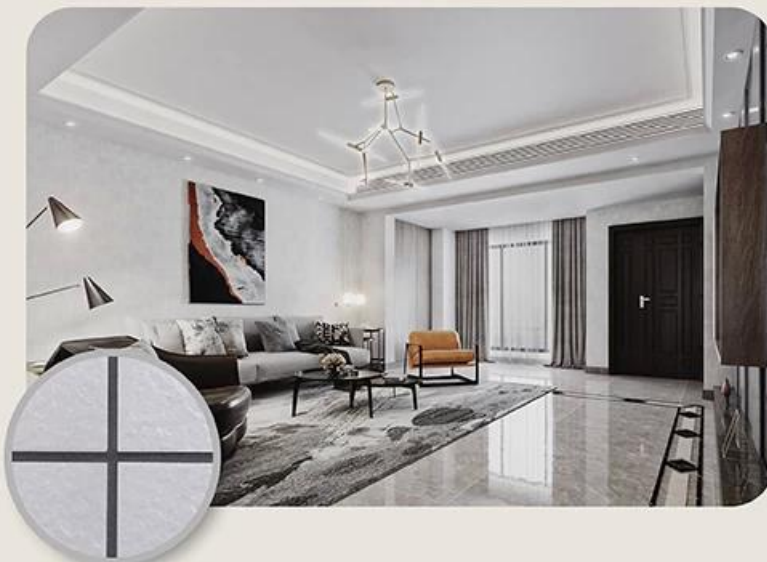
Olive Brown

Brown

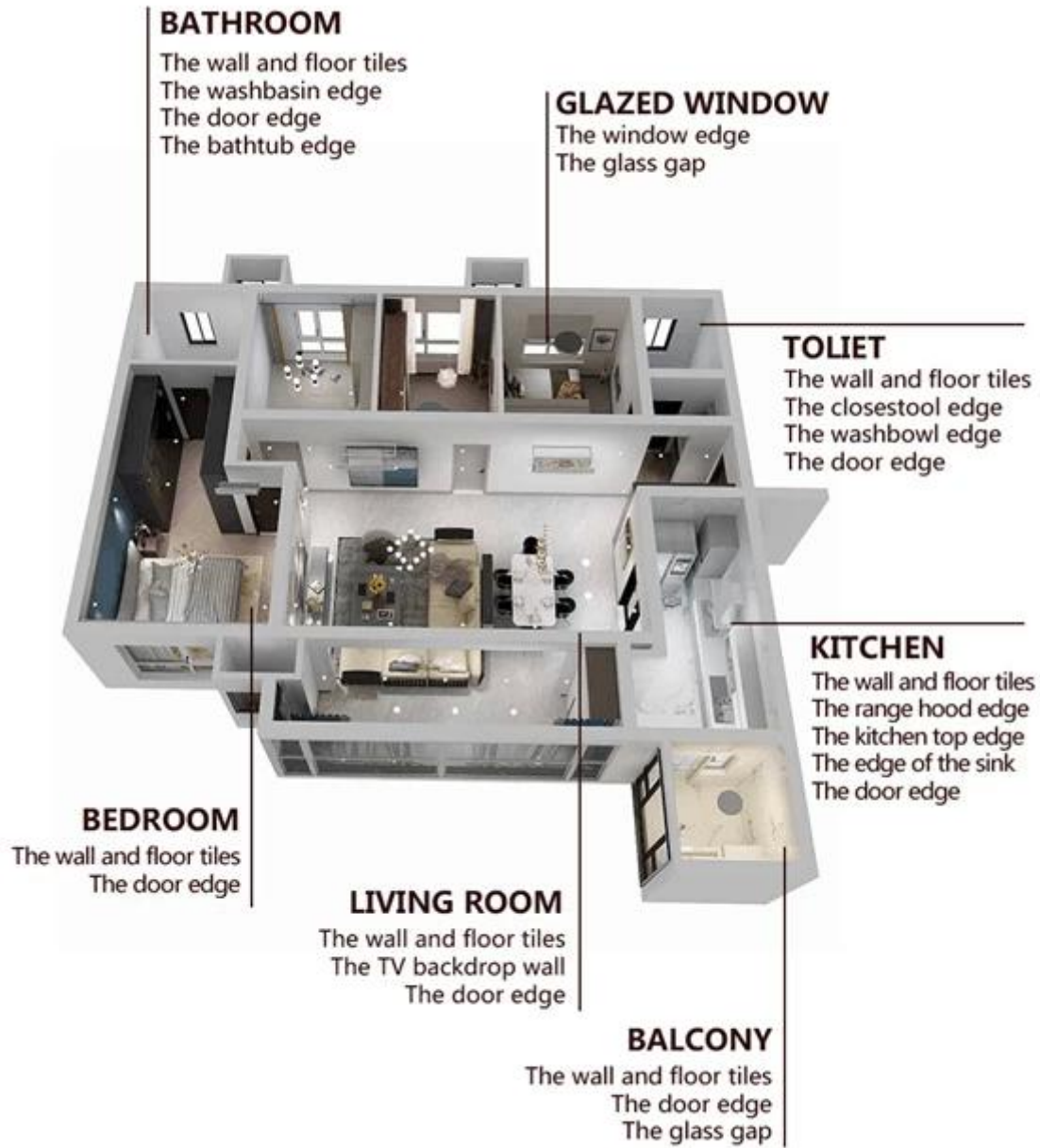
Reddish Brown

Dark Brown

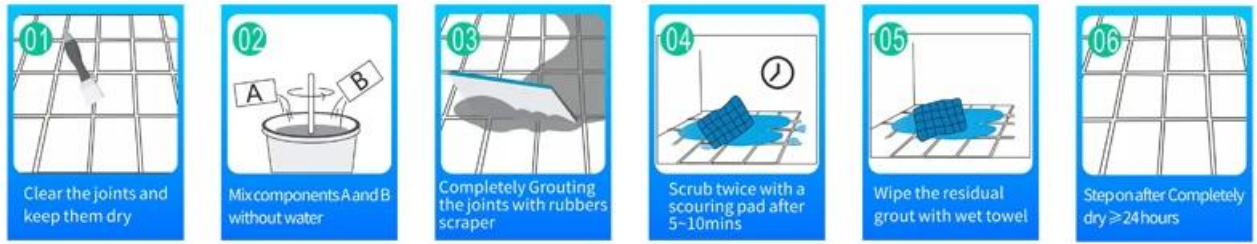
Rock Black



□□□□ □□□□ □□ □□□□□□ □□□□□□ □□□□□□ □□□□



□□□□□□□□ □□□□□□ □□□□□□□□

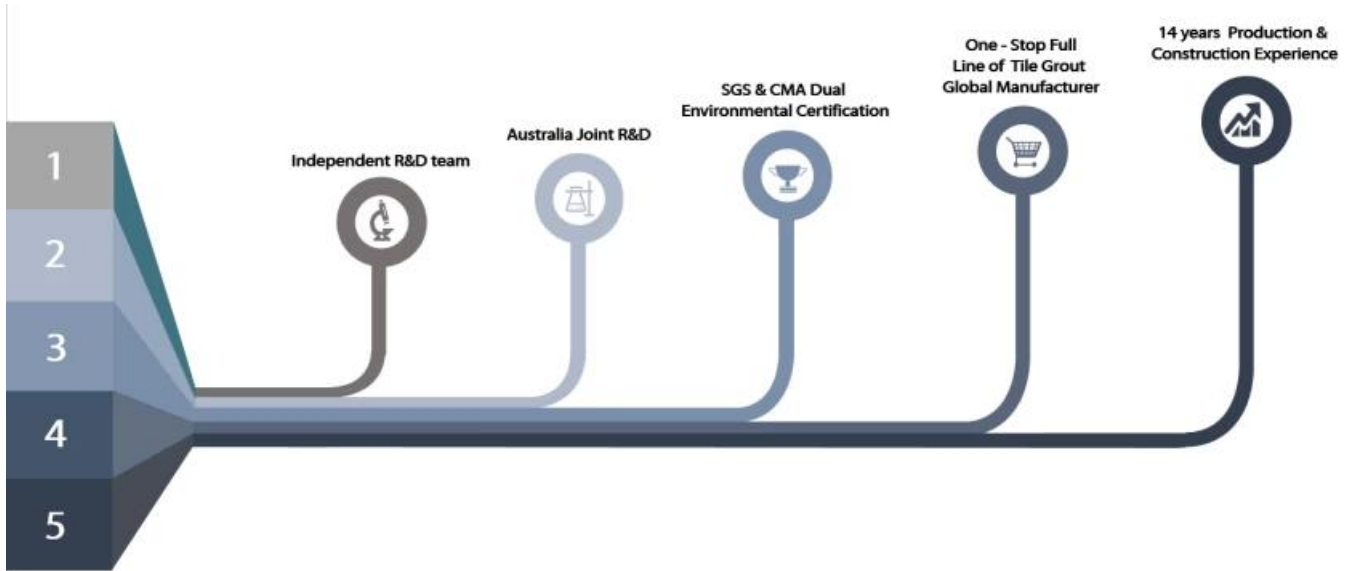


0000000000 00000000-000000 0000 000000



Cutter Knife | Pointing trowel | Brush | Rainbow Scraper | Stirring Knife | The sponge | Scouring Pad

000000 0000



00000000 00000000





XXXXXXXXXX XXXX XXXX



XXXXXXXXXX XXXX



XXXXXXXXXX XXXXXXXXXX XXXX



XXXXXXXXXX XXXXXXXXXX



XXXX XXXX XXXX



XXXXXXXX-XXXX XXXX XXXX



XXXXXXXXXXXX XXXXXXXXXX XXXX



XXXXXXX

XXXXXXXXXXXX

